

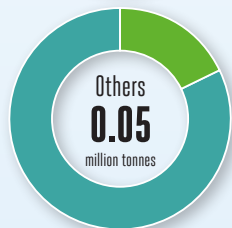
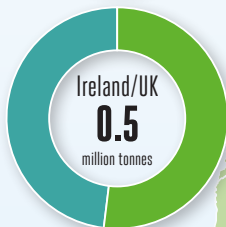
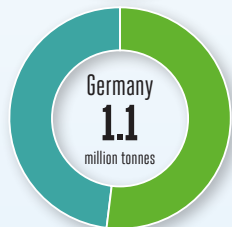
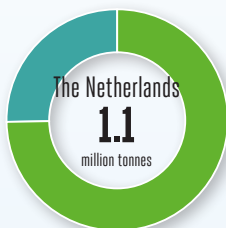


SUSTAINABLE WASTE MANAGEMENT IN THE CIRCULAR ECONOMY



THE INDAVER GROUP IN EUROPE

LOCATIONS AND VOLUMES IN 2016



Treatment
Trading

Belgium Antwerpen, Doel,
Grimbergen, Killo, Mechelen, Nivelles,
Waregem, Willebroek

The Netherlands Alphen aan den Rijn,
Bergschenhoek, Dordrecht, Goes, IJmuiden, Koegorspolder,
Moerdijk, Nieuworp, Rijpwetering, Rotterdam-Europoort,
's-Gravenpolder, Terneuzen, Voorschoten, Well

Germany Biebesheim, Billigheim, Frankfurt,
Hamburg, Kassel, Stuttgart, Wetzlar

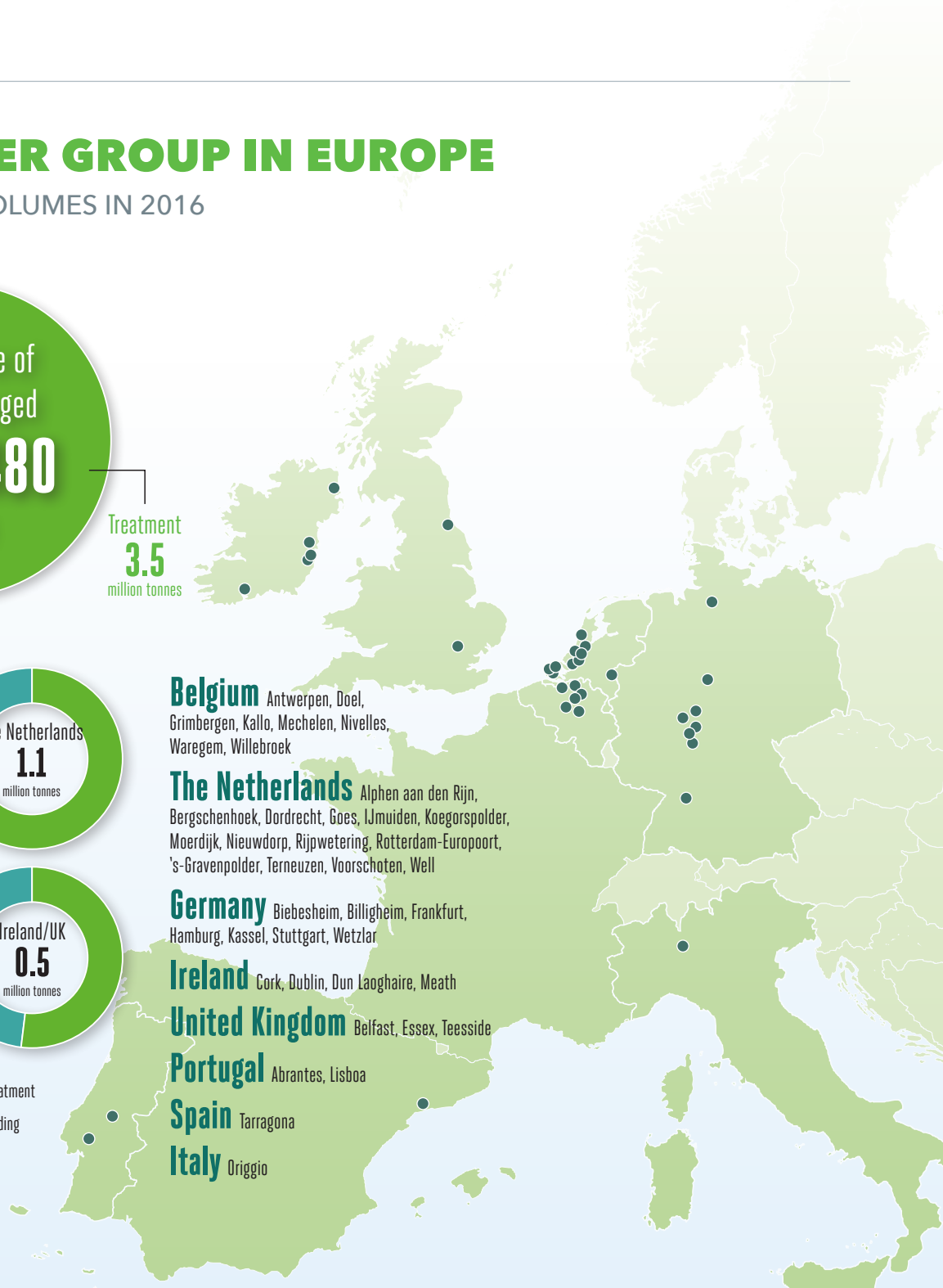
Ireland Cork, Dublin, Dun Laoghaire, Meath

United Kingdom Belfast, Essex, Teesside

Portugal Abrantes, Lisboa

Spain Tarragona

Italy Origgio



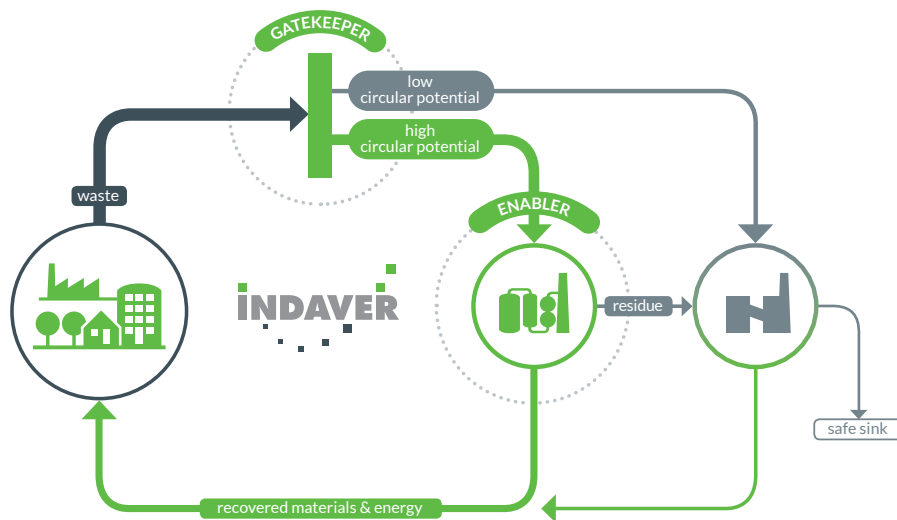
TOWARDS THE CIRCULAR ECONOMY

Together, raw materials and energy form the basis of humanity's prosperity. Both need to be conserved in order to provide a sustainable world for ourselves and future generations.

Indaver has long been aware that a sustainable world is possible only if we manage our waste cleverly and carefully. We play a key role in the realisation of the circular economy because we understand that waste is a rich resource that can replace raw materials if handled wisely. We create value from waste through the recovery of high-grade materials and sustainable energy. We also prevent harmful substances from re-entering the materials chain. We champion the closing of material loops in a safe, low-carbon, energy-efficient way, because it is the only way to preserve prosperity and well-being in the long-term.

Our Sustainability Report, produced annually, shows our joined-up thinking approach to sustainability and, more specifically, the circular economy. It is divided thematically into sections concerning policy, people, planet, prosperity, and partnerships.

Find out more at www.indaver.com/sustainabilityreport



ENABLER

In a circular economy, everyone reduces, reuses, recycles, and recovers materials as efficiently as possible. At our high-tech facilities, we extract the maximum amount of high-grade materials from the waste we treat. Industry then reuses these materials. Through thermal treatment, we recover energy from residual, non-recyclable waste. This energy is transported to commercial users through district heating networks and electrical grids, providing them with steam, heating, and electricity. Thus, we avoid and reduce CO₂ emissions and reduce reliance on finite fossil fuels.

GATEKEEPER

In a circular economy, it's of the utmost importance to protect the materials loop from contamination. This gatekeeper function is an important part of Indaver's role. Indaver provides a safe solution for hazardous and undesirable components. Our thermal processes destroy or isolate harmful elements in residual waste, preventing them from re-entering the materials chain. Where there are contaminants that cannot be destroyed, we store them safely in our specialised landfills. Together, all of these measures keep the materials loop clean and safe.

INDAVER AT A GLANCE

KEY FACTS AND FIGURES 2016

INVESTING IN OUR PEOPLE

Indaver is knowledge-driven. We attract, develop, and retain talent so as to provide the best solutions for our customers. We provide a learning environment to deepen and broaden our expertise, and to create a resilient, adaptable workforce. Our approach benefits everyone: it's good for staff, customers, and the organisation.

Employees

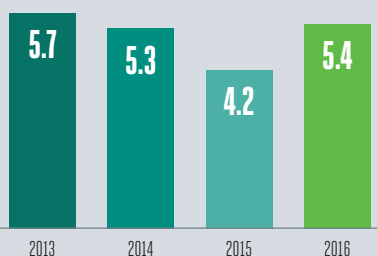


Total Group: **1,639**

SAFETY FIRST

Safety is integral to us. We're proud of our flourishing safety culture, and we've invested in tools and procedures to report, record, and monitor safety across the organisation. We provide safety training, health check-ups, and the correct protective equipment. We ensure that each of our facilities is a safe place to work.

Safety index

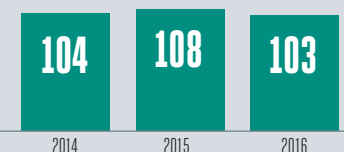


Training hours

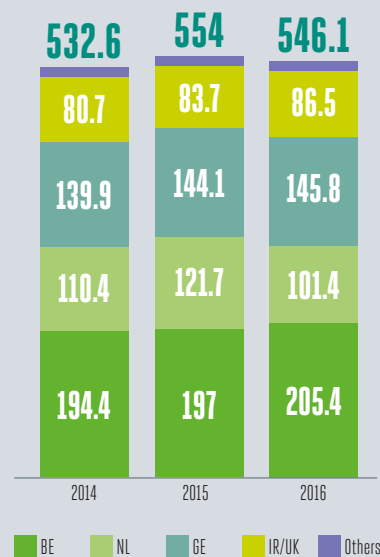


KEY FIGURES

Group EBITDA (in million Euro)



Group operating revenue (in million Euro)



WHAT WE DO

Indaver operates specialist facilities using intelligent waste management systems. Our emphasis is on the sustainable recovery of materials and energy.

Waste-to-energy

If all the energy recovered during our thermal treatment processes were converted into electricity, it would satisfy the energy consumption needs of 256,000 families annually (calculated with an average consumption of 3.5 MWh/household per year).

High temperature incineration

Rotary kilns thermally treat non-recyclable industrial and hazardous waste. They safely destroy the hazardous components of waste, preventing them from re-entering the materials cycle.

Recovery of materials

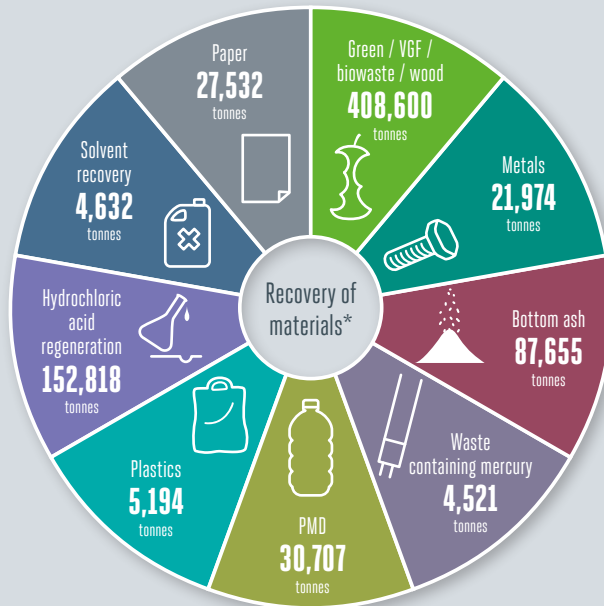
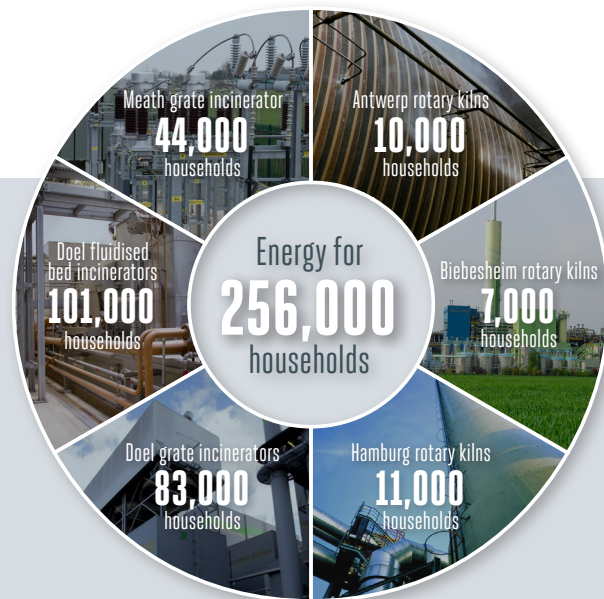
Indaver strives to recover maximum materials. In 2016, 1.27 million tonnes of waste streams appointed for material recovery were processed. Of this, Indaver processed 743,663 tonnes at its own facilities.

Landfill operation and remediation

Indaver manages and operates landfills, and generates energy from the recovered gas. Indaver can provide comprehensive remediation services for contaminated sites.

Green gas

Besides the energy generated by our incineration facilities, we also produce green gas out of organic residues in Alphen aan den Rijn (The Netherlands).



* Waste streams appointed for recovery of materials processed at Indaver facilities



Read the full Sustainability Report 2016 here:
www.indaver.com/sustainabilityreport

BELGIUM www.indaver.be

THE NETHERLANDS www.indaver.nl

FRANCE www.indaver.fr

GERMANY www.indaver.de

IRELAND www.indaver.ie

UNITED KINGDOM www.indaver.co.uk

PORTUGAL www.indaver.pt

ITALY www.indaver.it

SPAIN www.indaver.es

www.indaver.com